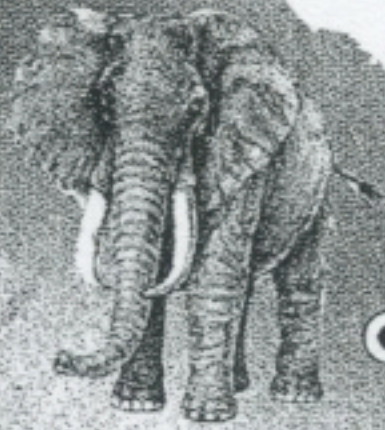
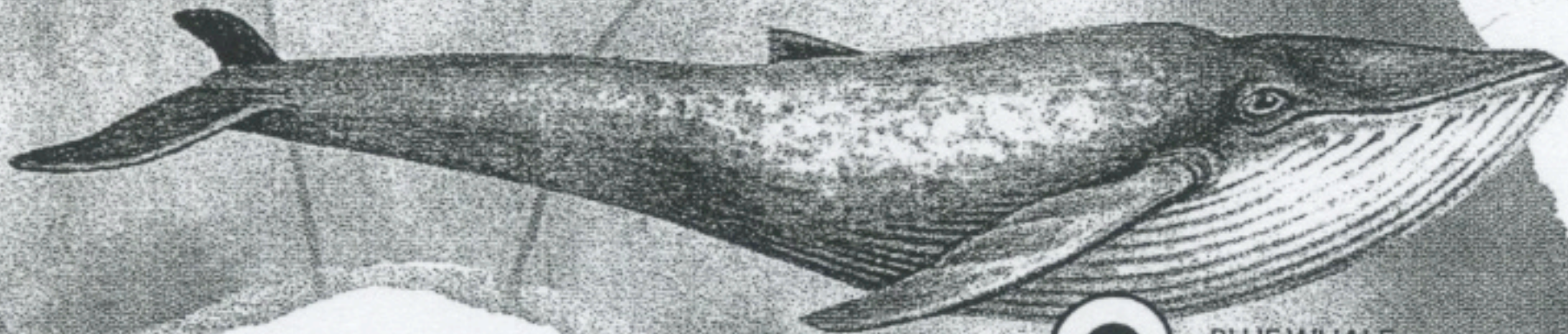


APPROXIMATE MAXIMUM
DIAMETER OF EYE:



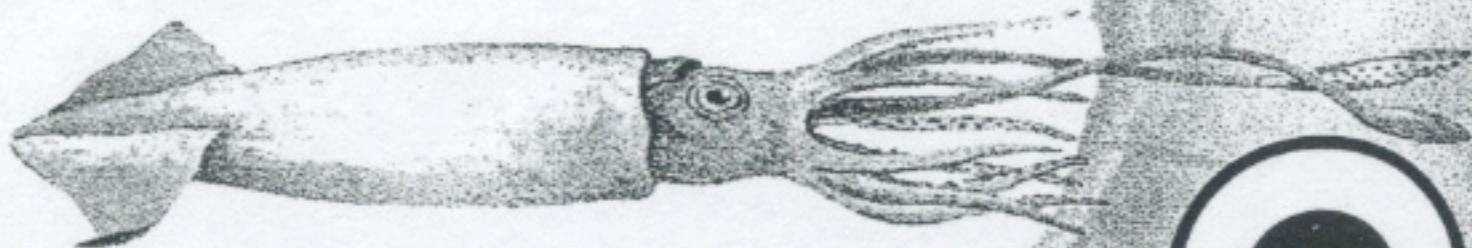
AFRICAN ELEPHANT
5 CENTIMETERS



BLUE WHALE
15 CENTIMETERS



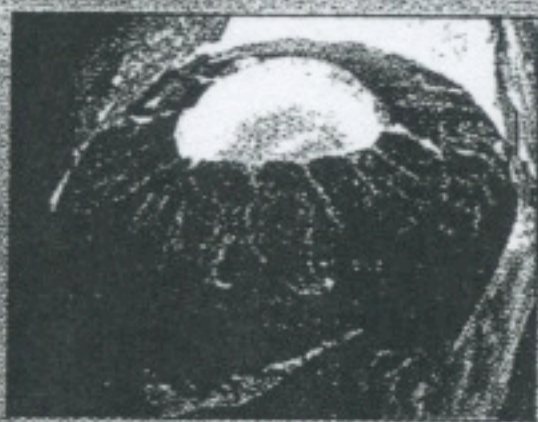
OPHTHALMOSAURUS
23 CENTIMETERS



GIANT SQUID
25 CENTIMETERS



TEMNODONTOSAURUS
26 CENTIMETERS



ICHTHYOSAUR EYES were surprisingly large. Analyses of doughnut-shaped eye bones called sclerotic rings reveal that *Ophthalmosaurus* had the largest eyes relative to body size of any adult vertebrate, living or extinct, and that *Temnodontosaurus* had the biggest eyes, period. The beige shape in the background is the size of an *Ophthalmosaurus* sclerotic ring. The photograph depicts a well-preserved ring from *Stenopterygius*.

Ref size of
sclerotic ring
of *Ophthalmosaurus*



FACT: Their eyes were the largest of any animal, living or dead